



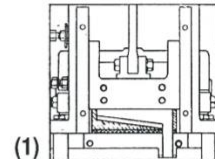
# EAGLE

## STRIP CUTTER XD-906Y

The electronic, digitally controlled Eagle Strip Cutter will automatically and accurately cut a wide range of different materials to a preselected length with tolerance  $\pm .04$  inch. The Eagle *XD-906Y* comes standard with hot and cold knives, electronically controlled dwell timer, stop motion for automatically stopping the machine when the material runs out, as well as an electronic counter for presetting the number of cutting cycles required.

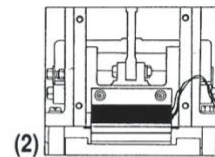
### COLD KNIFE:

The "scissor action" cold knife is actuated by a cam, which moves a crank that operates the upper and lower knives to complete the cutting cycle. The knives are made of SKH material, which is extremely durable and has a long expected life. Suitable for tapes, felt, electrical cable, wrapping tube, ribbons, buckram, velcro, paper products, rope, carpet, cords, waistbands, elastic bands, film, plastic zippers, rubberized strips, air and water hose, natural and knitted fabrics. Figure (1)



### HOT KNIFE:

The hot knife assembly consists of an 800 W heater and knife, with solid-state temperature control adjustable according to the type of material to be cut. Suitable for webbing, seat belts, nylon rope, synthetic tape and cords, harnesses, parachute straps, artificial ribbon, luggage straps, polyesters and polypropylene. Figure (2)



### OPTIONS:

- **Adjustable Sensitivity Digital Tracking System:**  
ASDTS detects marks or colors on the material to be cut for automation of the cutting process with variable lengths.
- **AR-180:**  
Motorized Prefeeder minimizes stretch and slippage on elastic and on heavier materials to insure accuracy.



### SPECIFICATIONS:

MODEL	MAXIMUM CUTTING WIDTH	MAXIMUM CUTTING LENGTH	MOTOR	MAXIMUM FEED RATE	TABLE SIZE/ SHIPPING WEIGHT
<i><b>XD-906Y</b></i>	6 7/8" Hot 6 1/2" Cold	13,000 yards	Stepping Motor 200 Steps/ rev. 3.5mm 60W	492 feet/minute	24"X24"x44" /200 lbs.

RELATIONSHIP BETWEEN LENGTH & CUTTING SPEED	
Length (inches)	Speed (cuts/minute)
0 - 4	100
4 - 8	80
8 - 16	70
16 - 20	60
20 - 30	50
30 - 45	40
45+	30

Maximum Speed: 30-100 cuts per minute according to the application and feed rate selection. A total of 10 feed rate steps can be set electronically. Where time dwell is required, production will vary.

**HOFFMAN  
BROTHERS**   
DIVISION OF SCOTT LEASING, INC.

1795 BIRCHWOOD AVE.

• DES PLAINES, IL 60018-3005

• PHONE (847) 671-1550

• FAX (847) 671-1320